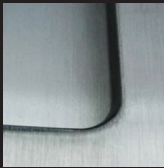


Halliday + Baillie sliding door hardware is available in the following durable high-quality finishes. Not all finishes are available in all regions. Check with your dealer.



SC : Satin Chrome



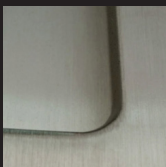
BC/BSC : Brushed Chrome



PC : Polished Chrome



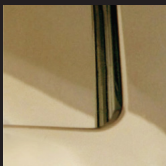
KC : Matt Black Chrome



BN : Brushed Nickel
also available for Door Stops



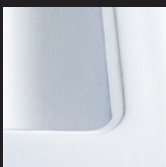
PN : Polished Nickel



PB : Polished Brass
(unlacquered)



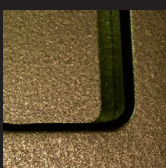
DB : Dark Bronze
also available for Door Stops



WHT : Powder Coat
Appliance White



EBA : Powder Coat
Electro™ Black Ace



EMB : Powder Coat
Electro™ Medium
Bronze



EDB : Powder Coat
Electro™ Dark Bronze

THE FINISHES

■ Please check with your local Halliday + Baillie representative as not all finishes are available in all regions.

A general note on electroplating: Electroplating is done by passing an electric current through a solution that contains metal and the object being plated. The current causes the metal in the solution to be attracted to the object and to bond with it. The finishes (listed below) can be plated onto most metals including: steel, stainless steel, brass, copper, tin, lead, gold, silver, zinc, and aluminum.

SC : To achieve this finish a special satin nickel plating process is used. Additives to the nickel cause the plating process to produce a velvet/satin result that is then over-plated with chrome. This smooth finish is ideal for both interior and exterior use, where superior durability is required.

BC/BSC : This process follows the steps as for brushed nickel. After the brushing step, articles are plated with a layer of chrome.

PC : Our bright/polished chrome undergoes a twofold nickel duplex process, followed by a high shine polish. After polishing, articles are plated with a layer of chrome.

KC : Here black chrome is plated onto a duplex nickel layer. See "Brushed Nickel" for a description of the duplex process.

BN : Our brushed nickel finish undergoes a twofold nickel duplex process to provide extra protection. The first layer is a semi-bright sulphur free nickel for corrosion resistance. This is followed by a second nickel layer containing sulphur for brightness. When the two layers are present a much higher corrosion resistance is achieved than just the semi-bright layer on its own. After coating the items are brushed for a soft look which is a match to satin or brushed stainless steel.

PN : Our bright/polished nickel finish undergoes a twofold nickel duplex process as above. After coating the items are polished to a high shine mirror finish.

PB : To achieve this finish a thick layer of brass is electrodeposited on the article which is then brushed to produce an even appearance. On dispatch this finish is a bright polished brass without further coating or lacquer, therefore this process is considered a 'living finish' and will dull and patina over time and with different weather conditions if not kept polished. This is not considered a flaw in the process but rather, a desirable characteristic of the continuous aging process of this material.

DB : To achieve this finish a thick layer of brass is electrodeposited on the article which is then brushed to produce an even appearance as above. A special aging solution is then used to simulate a natural antique look. The surface is then wiped with oil. This process is considered a 'living finish' and will patina over time and with different weather conditions. This is not considered a flaw in the process but rather, a desirable characteristic of the continuous aging process of this material.

WHT : The Halliday + Baillie standard powder coat colours are applied electrostatically and then cured under heat to allow it to form a "skin". The powder may be thermoplastic or a thermoset polymer and is used to create a hard finish that is tougher than a conventional paint. The standard colours are Appliance White (Dulux 91558853), and the three finishes below. Custom powder coating can be ordered, with timing and pricing confirmed on order.

EBA, EMB & EDB : Unlike anodized finishes Electro™ powder coatings can be applied to a wide variety of substrates. Electro™ finishes are highly durable and made from UV resistant materials. No liquid chemicals, solvents or caustic solutions are used in the manufacture of the Electro™ powder coatings and Electro™ powder coatings have a negligible VOC content. These coatings are suitable for a range of climatic conditions, from hot to cold and humid to dry. Please note Electro™ Medium Bronze has a pearlescent or metallic content rather than a standard flat paint finish.



SC : Satin Chrome
for Aluminum
Handrail Brackets
& Door Stops



BS : Milled
Stainless Steel
for Stainless Steel
Handrail Brackets



CS : Cast Stainless
Steel (only HB 510)
for Stainless Steel
Handrail Brackets