

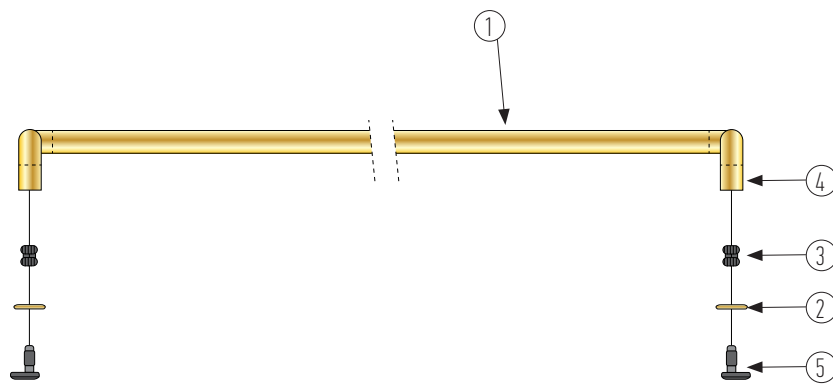
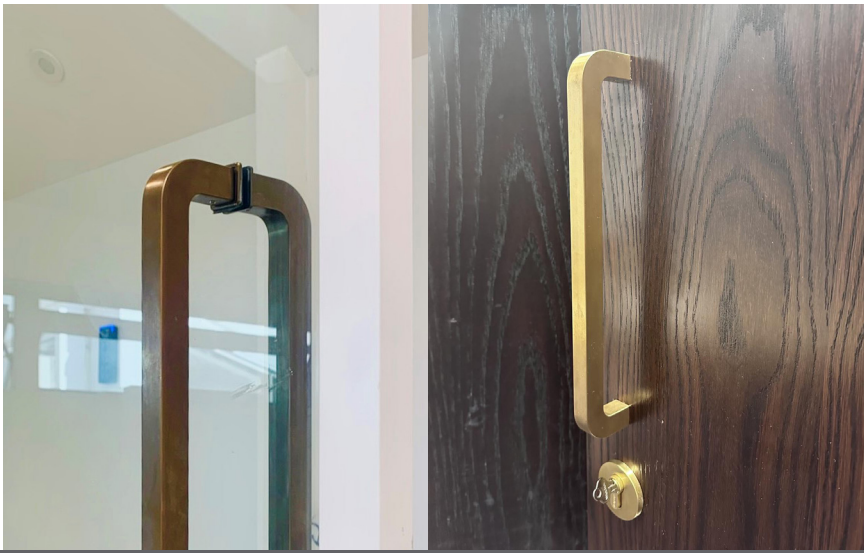
HB2330 Aluminium Face Fix Kit

For HB 2330 Series Brass D Pulls
HB 2330 19mm AFace

The HB 2330 Aluminium Face Fix Kit is designed for installation of the HB 2330 Series D Pulls on aluminium joinery doors where a pull is required to one side of the door only. Please note that the aluminium fix adaptor requires a drill hole of 12mm to be made in the door frame. Kits come with all parts required for mounting, D pull and roses are sold separately.

Fixing kits for other fixings methods including back to back fix, and glass door fixing are also available.

Available in selected finishes including Aged Brass, Polished Brass, Satin Brass, and Black Chrome.



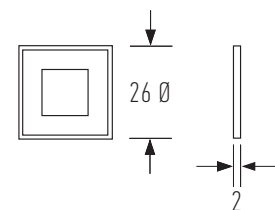
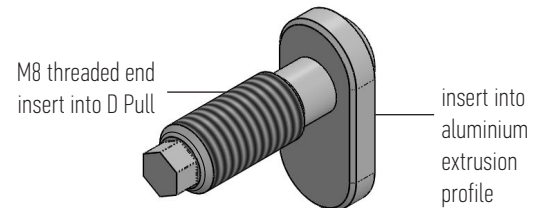
Components for HB 2330 Aluminium Face Fix Kit

- ① Brass D Pull (sold separately in 300mm & 600mm lengths)
- ② Brass rose (these are supplied with the D Pull and installation is optional but are recommended on single side fixing sets)
- ③ M8 Bolt fixing insert
- ④ Grub screw
- ⑤ Aluminium fix adaptor

Installation instructions

1. Mark door with the centre to centre measurement appropriate for the D Pull being used.
2. Drill 12mm holes at centre to centre points in aluminium profile.
3. Drop oval non-threaded end of fix adaptor into drilled hole.
4. If brass roses are being used these need to be slid over the aluminium fix adaptor.
5. Screw M Bolt adaptor over threaded part of aluminium fix adaptor.
6. Slide D Pull over aluminium fix adaptor threaded rod and secure in place with grub screws provided.

ALUMINIUM FIX ADAPTER



Square Rose

Designed and manufactured in New Zealand. For more information, installation templates, and measured drawings of this product and others please visit : www.hallidaybaillie.com or contact your authorized Halliday + Baillie dealer. All information subject to change.