

**halliday
baillie**

HB 2220 Back to Back Fix Kit

For HB 2200 Series Brass D Pulls

HB 2220 19mm BtB : Back to Back Kit, HB 2200 Series 19mm Rod

The HB 2220 Back to Back Kit is designed for installation of the HB 2200 Series D Pulls on timber or aluminium doors. Kits come with all parts required for mounting the D pulls. Pulls and roses are sold separately. Threaded rod is available in multiple lengths to accommodate doors 24-75mm thick. Please provide door thickness for order.

Kits for other fixing methods including single side fixing into timber doors, through fix, aluminium single side fix and glass door fixing are also available.

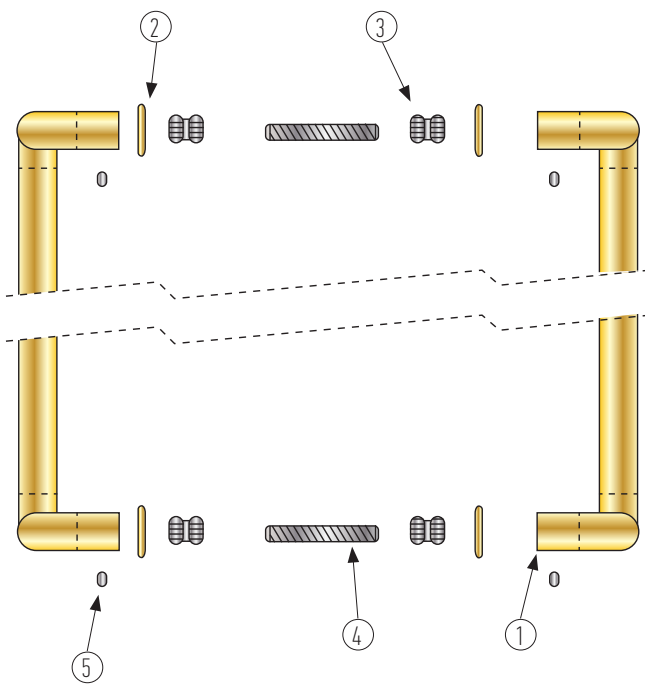
Please note all finishes below are unlacquered:

AB : Aged Brass

SB : Satin Brass

PB : Polished Brass

KC : Black Chrome

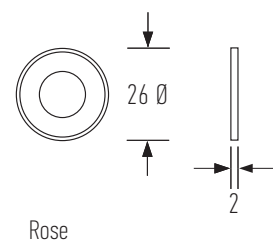
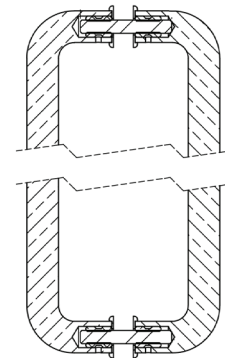


Components for HB 2220 Back to Back Fix Kit

- ① Brass roses (installation is optional)
- ② MBolt Fixing insert
- ③ M Threaded rod with hex end
- ④ Grub screw

Installation instructions

1. Insert MBolt fixing insert (3) into both ends of one of the D Pulls and secure with grub screws provided in the pull.
2. Screw threaded rods (4) into MBolt fixing insert on one of the D Pulls.
3. Drill 8mm hole through door at centres to match D Pull.
4. Insert the D Pulls with threaded rods through drilled holes. If brass roses are being used these need to be slid over the threaded rods before placing through the door.
5. Screw M8 Bolt fixing insert (3) over threaded rods on the reverse side of the door.
6. Slide remaining D Pull over fixing inserts and secure in place with grub screws provided.



Designed and manufactured in New Zealand. For more information, installation templates, and measured drawings of this product and others please visit : www.hallidaybaillie.com or contact your authorized Halliday + Baillie dealer. All information subject to change.