



**halliday
baillie**

HB 520 STAIR RAIL BRACKET

The Halliday + Baillie HB520 Rail Bracket provides a clean lined option for 1.18-1.96" diameter timber rails.

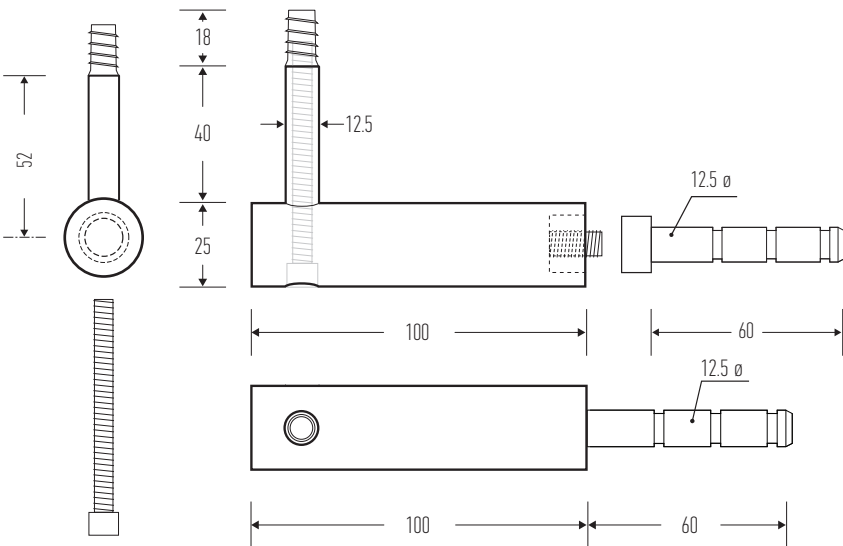
Suitable for interior or covered exterior situations. For exterior or marine environments, please specify the HB530 bracket in marine grade 316 stainless steel.

Projection from wall (offstand) : 3.93"
Overall height (upstand) : 2.55"

Includes all fasteners. Epoxy sold separately (please contact your local H+B dealer for further information).

Material : non-anodized aluminum alloy
Recommended Spacing : 23-32"

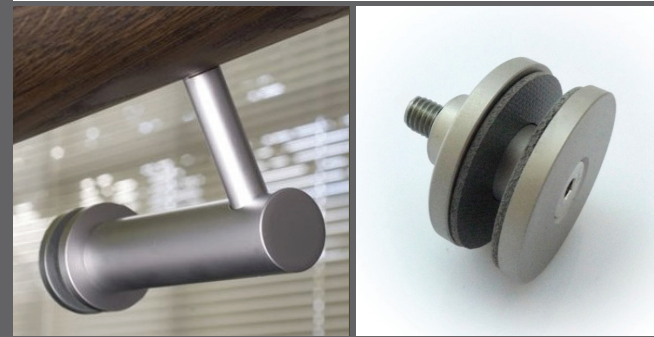
Available in all standard finishes except "BN" Brushed Nickel. Please check with your H+B representative as not all finishes are available in all regions. See finishes sheet for further details.



Halliday + Baillie brackets are tested in accordance with both the AS/NZS 1170.1:2002 (Structural Design Actions) standards and the International Building Code, IBC (2003) to comply with the 200lb fall rating.

Designed and manufactured in New Zealand. For more information, installation templates, and measured drawings of this product and others please visit : www.hallidaybaillie.com or contact your authorized Halliday + Baillie dealer. All information subject to change.

© 2020 v1 Halliday + Baillie Ltd.



HB 522 GLASS FIXING KIT FOR HB 520 BRACKET

Suitable for 0.39-0.59" glass thickness.

Finishes to match the HB520 Bracket.

Glass fixing kits sold separately (used in conjunction with the bracket, and not as a replacement).

